

HAKC

Enterprises Pty Ltd



Professional Reliable Experienced

Our Business

HAKC Enterprises Pty Ltd is a majority Aboriginal owned Pilbara based business servicing Western Australia. HAKC offers a wide range of services through our own staff and through local partnerships to provide a professional, reliable and experienced team. We pride ourselves on providing the very best quality, support and customer service under the HAKC brand and associated services.

About Us

HAKC Enterprises Pty Ltd was established in 2019 in response to a need for Aboriginal businesses to offer a range of services made available to head contractors supplying to the mining, oil and gas industry, government and building and construction industries. HAKC is committed to delivering service solutions to meet our client's needs. Whilst remaining reliable and trustworthy we deliver a quality service at a competitive price. Our aim is to build a trusted brand that is committed to Aboriginal training and employment opportunities and supporting the local economy wherever we operate.

Quality Service Guaranteed

100% local employment

Fully Insured and Licenced

Qualified, Experienced Staff

Quality Assurance &
HSE Management

Safety 1st

- Can Do Attitude

- Care - Respect

Professional
Reliable
Experienced

www.hakc.com.au

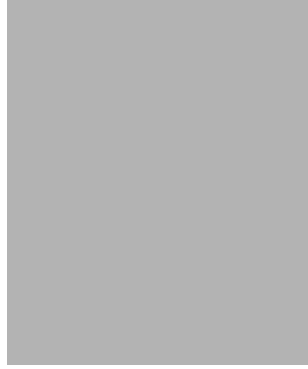
HAKC Enterprises Pty Ltd
PO Box
Karratha, WA 6714
admin@hakc.com.au



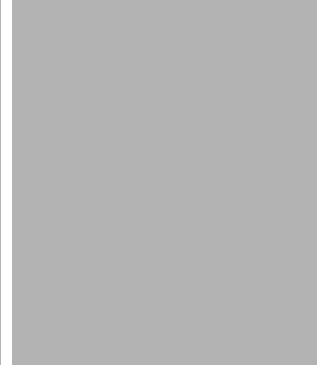
Haylee Bartlett



Alison Sentance



Kyle Bartlett



Chris Sentance

Our Leadership Team

Strong leadership and professionalism are key to developing long term proactive and collaborative partnerships industry partnerships. Our management team have many years' experience and knowledge in the resources and government sectors. Due to location most of our work has been in the Pilbara, however our employees have worked throughout Australia on various projects across all streams of our business.

The HAKC Leadership team include:

Haylee Bartlett – Director

As a Director of HAKC Enterprises Haylee spearheads the direction of the company and its associated partnerships ensuring that its purpose of maximising Aboriginal employment and supporting local economic growth is achieved. [Download Bio](#)

Alison Sentance, Director:

As a Director of HAKC Enterprises Alison is responsible for the company's overall financial and risk management, providing direction operationally and managing client contracts and corporate governance.

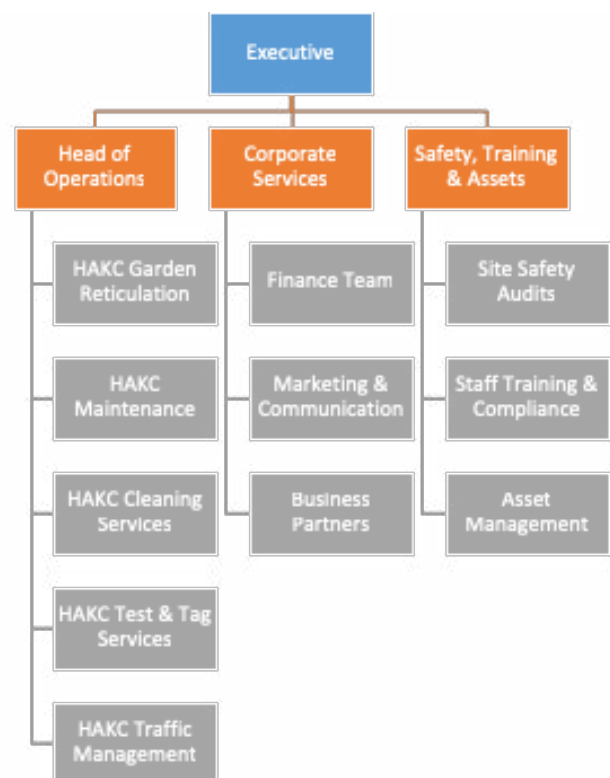
Kyle Bartlett, Head of Operations, Karratha:

Based in Karratha, Kyle is responsible for providing leadership and direction to our Karratha based operational teams responsible for implementing our contracts and managing our client relationships. [Download Bio](#)

Chris Sentance - Safety, Training and Assets Manager:

Based in Carnarvon, Chris is responsible for managing the company's assets and safety and risk management systems, providing overall training and support across our business.

Organisational governance structure



HAKC

Our Services

We take great pride in our service teams, who are experienced, highly skilled and knowledgeable to carry out their work in a safe and conscientious manner. Quality, Safety, customer service and value for money underpins everything we do, and it enables us to meet new challenges and provide a high level of Quality Assurance. Our office administration and job

scheduling are of high standard and delivered by our dedicated and highly effective customer service team.

HAKC Enterprises offers a wide range of services to the commercial, government and mining sectors:



HAKC Garden Reticulation

- Supply and Install all irrigation reticulation components
- Install services for new irrigation reticulation systems
- Routine and Programmed Maintenance



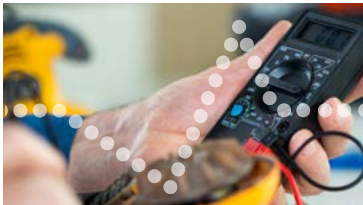
HAKC Garden Reticulation

- Supply and Install all irrigation reticulation components
- Install services for new irrigation reticulation systems
- Routine and Programmed Maintenance



HAKC Garden Reticulation

- Supply and Install all irrigation reticulation components
- Install services for new irrigation reticulation systems
- Routine and Programmed Maintenance



HAKC Garden Reticulation

- Supply and Install all irrigation reticulation components
- Install services for new irrigation reticulation systems
- Routine and Programmed Maintenance



HAKC Garden Reticulation

- Supply and Install all irrigation reticulation components
- Install services for new irrigation reticulation systems
- Routine and Programmed Maintenance

License and Regulations: Australian Standards AS1742.3 traffic control standards for works on roads
Australian Standards AS3760:2010 in-site services and testing of electrical equipment, Nationally Recognised Test and Tag TT101A, TT026A and TT024A

Our Journey

Lorem ipsum dolor sit amet, consectetur adipiscing elit, sed do eiusmod tempor incididunt ut labore et dolore magna aliqua. Ut enim ad minim veniam, quis nostrud exercitation ullamco laboris nisi ut aliquip ex ea commodo consequat. Duis aute irure dolor in reprehenderit in voluptate velit esse cillum dolore eu fugiat nulla pariatur. Excepteur sint occaecat cupidatat non proident, sunt in culpa qui officia deserunt mollit anim id est laborum.

Lorem ipsum dolor sit amet, consectetur adipiscing elit, sed do eiusmod tempor incididunt ut labore et dolore magna aliqua. Ut enim ad minim veniam, quis nostrud exercitation ullamco laboris nisi ut aliquip ex ea commodo consequat.

Partnership Opportunities

HAKC Enterprises partnership model allows us to partner with professional local businesses across our regional footprint. Our aim is to support both Aboriginal and/or small business to be competitive in the current market and our primary focus is on building capacity and increasing local Aboriginal employment opportunities. We provide a range of professional services to our clients and have a business model that has the capacity to build a greater range of services through its partnerships. This collaborative approach provides local businesses with the ability to work within a trusted brand and ensuring we maximise opportunities within local and regional towns.

Top Photo: To be advised, Centre photo To be advised, Bottom photo: To be advised